

Have a happy time at Disneyland and a safe trip home. And, for a more care-free life at all times, be sure you and your family have the proper insurance protection. If you have any questions about your own insurance program—on your home, your car, your life or your health—call your local INA or PEG agent. You'll find his name in the yellow pages.

INA provides even broader service now, since the Pacific Employers Group (PEG), a California insurance company, merged with INA in 1965. PEG Headquarters are in Los Angeles.



Insurance Company of North America
World Headquarters, Philadelphia

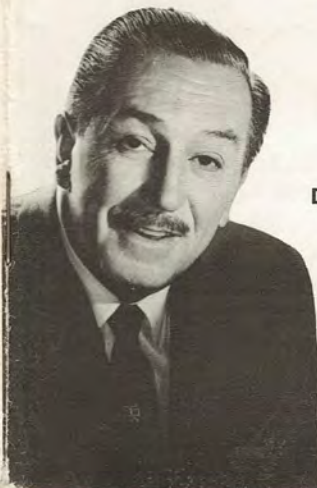
Your GUIDE to Disneyland

© Walt Disney Productions

Another **INA** Service

Welcome to Disneyland

All of us in the Magic Kingdom hope that your visit today will be a happy and memorable one. Your enjoyment of this and future visits is the first consideration of all Disneylanders. As you explore Disneyland, we suggest that you keep this guide with you. The information it contains has been prepared to help make your visit as pleasant an experience as possible.



WALT DISNEY



is happy to provide this Guide to help you enjoy your stay at Disneyland. Keep it as a memento of your visit.

Want to have the most fun during your visit to Disneyland? Need guidance on your travel plans during your stay in Southern California? Then be sure to visit Disneyland's official information center, Carefree Corner.



Carefree Corner is a public service of the more than 15,000 INA and PEG agents and brokers who serve the insurance-buying public. You are welcome at Carefree Corner, located on Main Street, U.S.A. INA's hostesses will be happy to meet you and answer your questions.

Table of Contents

	Page
General Information	2-3
The A-B-C's of Ticket Books	4
Guided Tour Information	4
Disneyland's Adventures and Attractions	5-7
Map of Disneyland	8-9
Main Street, U.S.A.	10-11
Adventureland	12-13
New Orleans Square	14-15
Frontierland	16-17
Fantasyland	18-19
Tomorrowland	20-21
Food and Refreshments	22-24
Shops and Stores	25-27
Your Entertainment Calendar	28-29
Free Shows and Exhibits	30
Index	31-33

General Information

General information about Disneyland may be obtained at City Hall on the left side of Town Square as you enter the Magic Kingdom. As you explore the Park feel free to ask any employee for assistance.

Information about other Southern California recreational attractions and public transportation schedules may be obtained at Carefree Corner on Main Street, U.S.A. Sponsored by INA, this also is Disneyland's official Guest Registration Center.

LOST AND FOUND

Lost and found facilities are maintained in the Global Van Lines Building, next to the Fire Station on Town Square, Main Street, U.S.A.

PUBLIC TELEPHONES ■■

Public telephones are located throughout Disneyland. Ask any Disneylander for the location of the nearest one or refer to the area maps.

LOCKER SERVICE

Facilities for checking purchases and garments are located in the Global Van Lines Building on Town Square, next to the Fire Station on Main Street, U.S.A. Locker service also is provided at the bus stop area just outside the Disneyland Main Entrance. Lockers large enough for suitcases are located at the rear of Ken-L-Land (see PET CARE, below).

POSTAGE STAMPS AND MAIL SERVICE

Stamps are available in vending machines located in each land, and at the Hallmark Communication Center on Main Street. Mail boxes for cards and letters are located throughout Disneyland. There is no United States Post Office within Disneyland.

PET CARE

Disneyland's Ken-L-Land provides pleasant facilities for your pet while you enjoy the Magic Kingdom itself. You may leave your pet in an airy, individual enclosure at a cost of 25 cents for the entire day. This charge includes a choice of Ken-L Rations pet food. Ken-L-Land is located to the right of the Main Gate Ticket Booths.

BANKING SERVICE

The Bank of America, located across Town Square from the City Hall, provides complete banking facilities. The Bank is open every day Disneyland is open, including Saturdays, Sundays and holidays, 10:00 a.m. to 4:00 p.m.

LOST CHILDREN

Facilities for the care of lost children are maintained at the end of East Plaza Street off Main Street, U.S.A. The matron in charge will assist you.

BABY STATION

The Baby Station is located adjacent to the First Aid Center on East Plaza Street. Facilities are provided for changing infants, preparing formulas and warming bottles. Sorry, baby-sitting is not available.

STROLLERS AND WHEEL CHAIRS

Strollers and wheel chairs are available for your use in Disneyland. They can be obtained for a nominal rental at the right side of the area just inside the Main Gate turnstiles.

BANKAMERICARD

Your BankAmericard is accepted in most Disneyland shops, stores and restaurants.

FIRST AID

Registered nurses are on duty at all times in the First Aid Center, located at the end of East Plaza Street, just off Main Street, U.S.A. An ambulance is available in case of emergencies.

REST ROOMS △

Rest rooms are located throughout Disneyland. Refer to the various area maps in this guide for the nearest one, or ask any Disneyland employee.

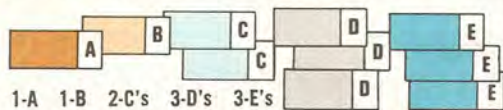
WHEN LEAVING DISNEYLAND . . .

If you wish to return to Disneyland today, have your hand stamped at the Exit Gate before you leave the Park.

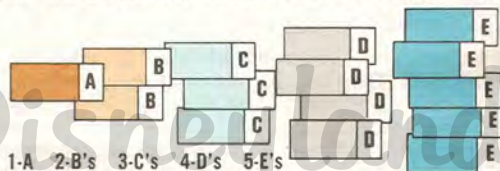
the A-B-C's etc. OF DISNEYLAND TICKET BOOKS

Disneyland Ticket Books are a most convenient way to enjoy the Magic Kingdom. Both the Big 10 and Deluxe 15 Ticket Books include admission to Disneyland and a selection of adventures and attractions on an "A," "B," "C," "D" and "E" ticket basis.

THE BIG 10 Ticket Book includes Admission to the Park and a selection of attractions as shown below:



THE DELUXE 15 Ticket Book includes Admission to the Park and a selection of attractions as shown below:



If you already have purchased a General Admission ticket, or you wish to enjoy additional adventures inside the Park, you may buy a 10-Adventure or a 15-Adventure Book at any Central Ticket Booth inside the Park. The 10-Adventure Book is \$3.25 and the 15-Adventure Book is \$4.00 for each guest. Refer to the area maps for locations.

Prices subject to change without notice.

Guided Tour Information

The popular Guided Tour is especially recommended for "first-time guests." Visitors are taken on an exciting tour of Disneyland by a charming Guide who tells the fascinating story of the Magic Kingdom's history and growth. The Guided Tour includes admission to Disneyland and a selection of six of the Park's popular attractions.

If you already have purchased a General Admission ticket you may buy a Guided Tour Ticket at the ticket booth adjacent to "Great Moments with Mr. Lincoln." Tour tickets, minus Main Gate admission, are \$3.00 for adults and \$2.75 for children.

Adventures and Attractions

A coupon or 10¢

MAIN STREET HORSE CARS (Main Street)

Board a horse-drawn trolley as it travels down the main street of 60 years ago.



HORSELESS CARRIAGE (Main Street)

A trip down Main Street aboard a replica of America's classic autos.

OMNIBUS (Main Street)

Ride to the entrance of the four "lands" on a double-decker bus.



FIRE ENGINE (Main Street)

"Answer the alarm" in Disneyland's very own fire wagon.



SURREY (Main Street)

Travel down Main Street in an elegant "surrey with the fringe on top."



SLEEPING BEAUTY CASTLE (Fantasyland)

See diorama scenes from the popular Walt Disney movie, "Sleeping Beauty."



KING ARTHUR CARROUSEL (Fantasyland)

Ride to the land of fantasy on one of the Carrousel's 72 prancing steeds.



20,000 LEAGUES EXHIBIT (Tomorrowland)

See the fabulous years-ahead submarine and sets from the Walt Disney movie.

B coupon or 25¢

MAIN STREET CINEMA (Main Street)

Enjoy the greats of the silent screen era featuring moviedom's brightest stars.



MOTOR BOAT CRUISE (Fantasyland)

Guide your motorboat through treacherous rapids and tricky currents.

FANTASYLAND THEATRE (Fantasyland)

View highlights of Walt Disney movies and cartoons.



SWISS FAMILY TREEHOUSE (Adventureland)

See the Swiss Family Robinson's tree-top home and enjoy an aerial view of Disneyland.

CASEY JR. CIRCUS TRAIN (Fantasyland)

The bright, gay circus train who "knew he could," travels a scenic route.



ART OF ANIMATION (Tomorrowland)

Learn the fascinating story of the cartoonists' craft: animation.

MAD TEA PARTY (Fantasyland)

Whirl and twirl in the Mad Hatter's wildly spinning cups and saucers.



C coupon or 35¢

TOMORROWLAND JETS (Tomorrowland)

Pilot a high-flying jet to Disneyland's outer space.



MIKE FINK KEEL BOATS (Frontierland)

A backwater water journey to adventure on the Rivers of America.



RICHFIELD'S AUTOPIAS (Fantasyland and Tomorrowland)

Youngsters of all ages can navigate these modernistic freeways of the future.



SHOOTING GALLERIES (Frontierland, Adventureland) Test your sharpshooting skills at still and moving targets.



PETER PAN FLIGHT (Fantasyland)

Fly over moonlit London and on to Never-Never Land aboard a pirate galleon.



DUMBO FLYING ELEPHANTS (Fantasyland) Soar high over Fantasyland aboard the elephant with aerodynamic ears.



MR. TOAD'S WILD RIDE (Fantasyland)

A hilariously hair-raising automobile ride through old London.



DOUGLAS ROCKET TO THE MOON (Tomorrowland)

Experience a flight to the moon as it actually will be in a few short years.



SNOW WHITE'S ADVENTURES (Fantasyland)

Travel through the Dark Forest to the Seven Dwarf's Diamond Mine.



ALICE IN WONDERLAND (Fantasyland)

Re-live the fantastic adventures of Alice in her down-the-rabbit-hole world.



D coupon or 60¢

MARK TWAIN STEAMBOAT (Frontierland)

Ride the gleaming sternwheeler as it travels around the Rivers of America.



COLUMBIA SAILING SHIP (Frontierland)

Sail the Rivers of America on a replica of the first American ship to girdle the globe. See the maritime museum below decks.



STORYBOOK LAND CANAL BOATS (Fantasyland)

View the world of fantasy and fairy tales from quaint Dutch canal boats.



SKYWAY (Tomorrowland, Fantasyland)

View the entire Magic Kingdom from new four-seat skyway buckets.



FLYING SAUCERS (Tomorrowland)

Pilot your own flying saucer to thrills and fun.



MINE TRAIN RIDE (Frontierland)

Take the Western Mine Train through Nature's Wonderland, Rainbow Caverns, and much more.



SANTA FE & DISNEYLAND RAILROAD (Main Street, Frontierland, Tomorrowland, New Orleans Square)

Board one of five trains for a grand circle tour of the Magic Kingdom, and a journey through the Grand Canyon into the fantastic Primeval World.

INDIAN WAR CANOES (Frontierland)

Row your own war canoe under the guidance of a real Indian guide.



TOM SAWYER ISLAND RAFTS (Frontierland)

Explore Tom Sawyer Island with its many caves and Fort Wilderness.



E coupon or adults 75¢, children 65¢

PACK MULES (Frontierland)

See Nature's Wonderland from the back of a sturdy pack mule.



JUNGLE RIVER CRUISE (Adventureland)

Travel through tropical jungles and exotic areas of the world on a jungle launch.



GREAT MOMENTS WITH MR. LINCOLN

presented by LINCOLN SAVINGS & LOAN ASSOCIATION (Main Street)

Mr. Lincoln "comes to life" in this world-acclaimed attraction. Young people, up to 17 years old, receive a complimentary ticket with their Disneyland admission.



DISNEYLAND-ALWEG MONORAIL TRAINS (Tomorrowland)

Circle above and around Disneyland on the transportation system of tomorrow.



MATTERHORN BOBSLEDS (Tomorrowland)

Race down and around "snow-covered" slopes in a thrilling bobsled run.



ENCHANTED TIKI ROOM presented by UNITED AIR LINES (Adventureland)

A Polynesian Paradise, where 225 birds, flowers and tropical tikis entertain.



SUBMARINE VOYAGE (Tomorrowland)

Journey through "liquid space" on an exciting undersea cruise to the North Pole.



"IT'S A SMALL WORLD" presented by BANK OF AMERICA (Fantasyland)

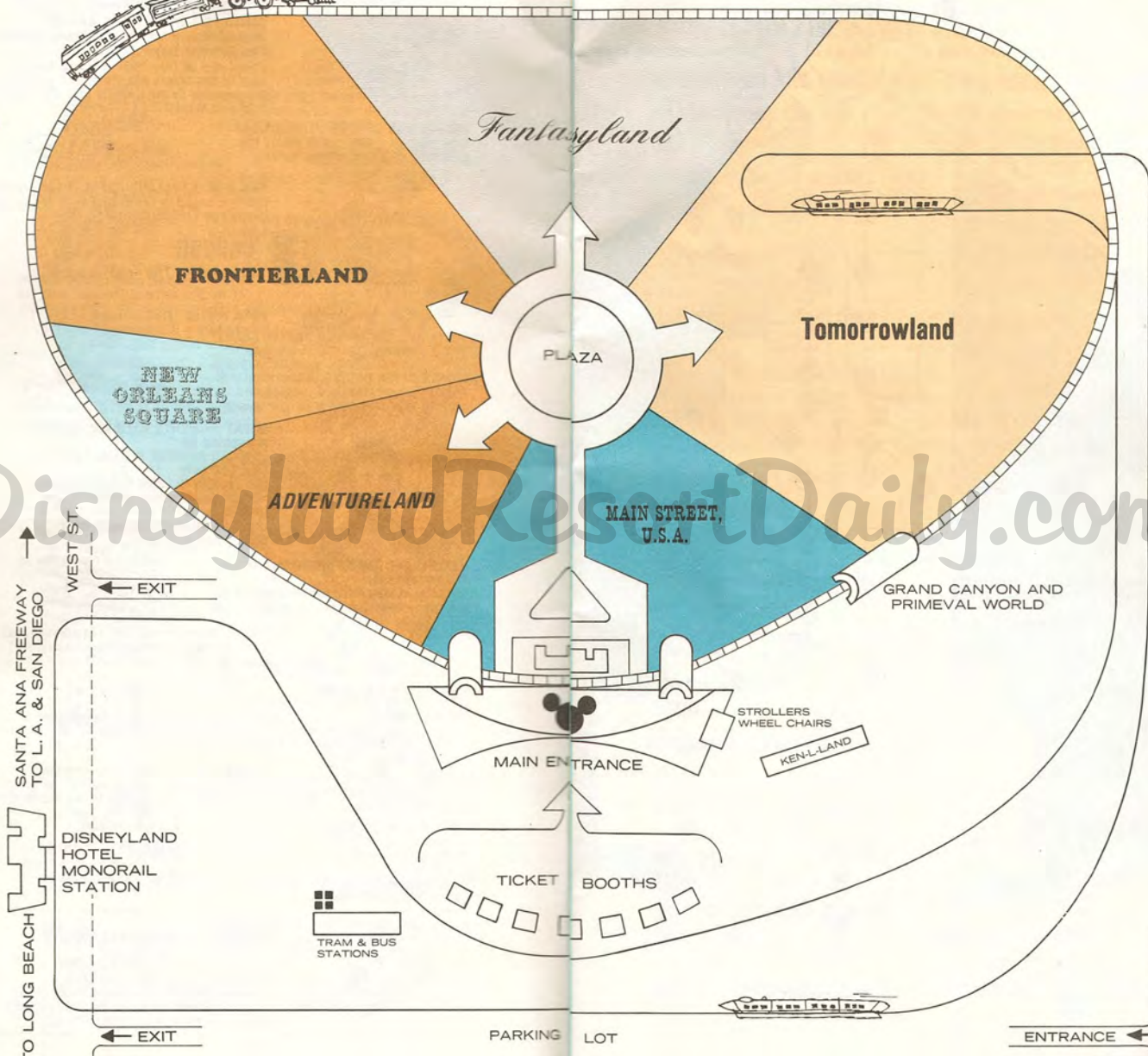
Join the happiest crew that ever sailed around the world.



Coming Soon! PIRATES OF THE CARIBBEAN (New Orleans Square)

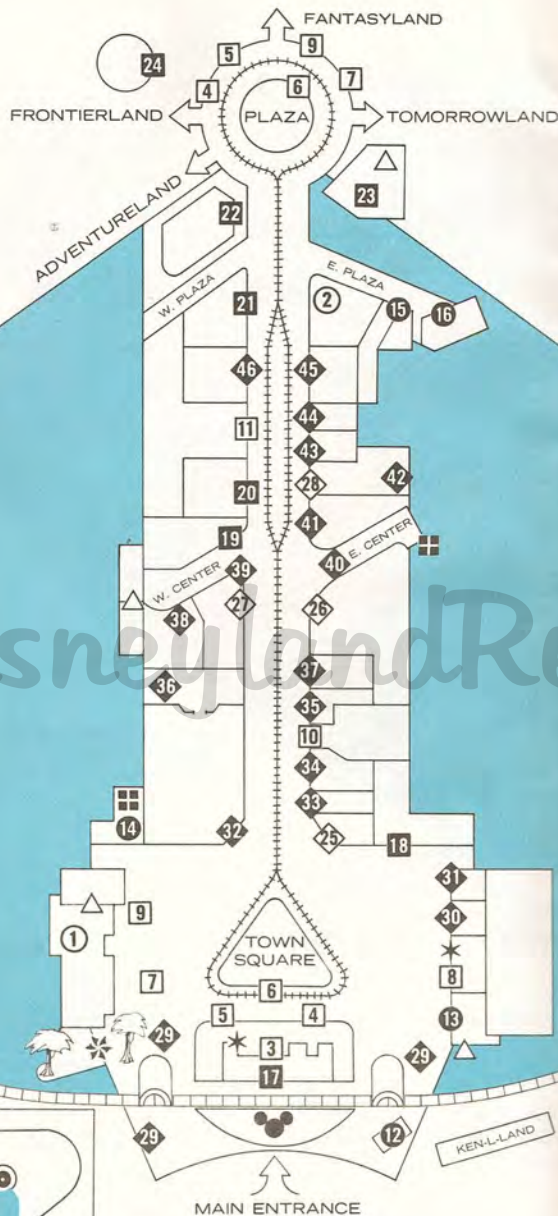
Sail through the wildest adventure that ever rocked the Spanish Main. It takes place in the Magic Kingdom's newest "land," and will be Disneyland's most spectacular adventure of all.





DisneylandResortDaily.com

MAIN STREET, U.S.A.



INFORMATION AND ASSISTANCE

- ① Disneyland City Hall
 - ② INA Carefree Corner
- ### ADVENTURES AND ATTRACTIONS
- ③ Santa Fe & Disneyland Railroad
 - ④ Omnibus
 - ⑤ Horseless Carriage
 - ⑥ Main Street Horse Cars
 - ⑦ Surrey
 - ⑧ Great Moments with Mr. Lincoln presented by Lincoln Savings & Loan Association

SERVICES

- ⑨ Fire Engine
- ⑩ Main Street Cinema
- ⑪ Penny Arcade
- ⑫ Strollers and Wheel Chairs
- ⑬ Bank of America
- ⑭ Global's Storage Lockers and Lost and Found
- ⑮ Baby Station
- ⑯ First Aid and Lost Children

FOOD AND REFRESHMENTS

- ⑰ Train Depot Snack Bar
- ⑱ Hills Bros. Coffee House and Garden
- ⑲ Carnation Ice Cream Parlor
- ⑳ Sunkist Citrus House
- ㉑ Coke Refreshment Corner
- ㉒ Plaza Pavilion
- ㉓ Plaza Inn
- ㉔ Carnation Plaza Gardens

FREE SHOWS AND EXHIBITS

- ㉕ Wurlitzer Music Hall
- ㉖ Swift's Market House and C & H Sugar Corner
- ㉗ Upjohn Pharmacy
- ㉘ Eastman Kodak Exhibit

SHOPS AND STORES

- ㉙ Souvenir Stands
- ㉚ Wonderland Music Shop
- ㉛ Mad Hatter Shop
- ㉜ Emporium
- ㉝ Magic Shop
- ㉞ Tobacco Shop
- ㉟ Jewelry Store
- ㊱ Crystal Arcade
- ㊲ Main Street Gifts
- ㊳ Book and Candle Shop
- ㊴ Flower Market
- ㊵ Art Festival
- ㊶ Hallmark Communication Center

- ㊷ Camera Shop
- ㊸ Timex Watches
- ㊹ Silhouette Studio
- ㊺ China Shop
- ㊻ Candy Palace

☒ TELEPHONES

△ REST ROOMS

* TICKET BOOTHS

✳ GUIDED TOUR GARDEN

ADVENTURELAND

ADVENTURES AND ATTRACTIONS

- 1 United Air Lines Enchanted Tiki Room
- 2 Big Game Safari Shooting Gallery
- 3 Jungle River Cruise
- 4 Swiss Family Treehouse
- 5 Tahitian Terrace
- 6 Sunkist, "I Presume"
- 7 Aunt Jemima's Kitchen

SHOPS AND STORES

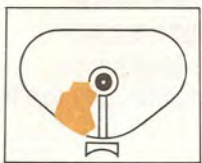
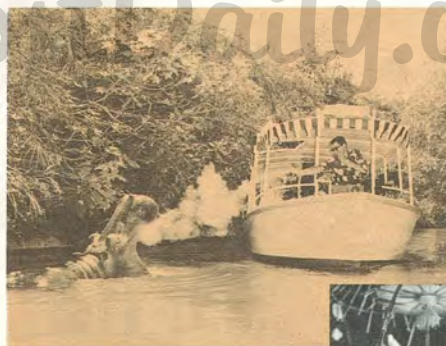
- 8 Adventureland Bazaar
- 9 Tiki's Tropical Traders
- 10 Adventureland Traders

FOOD AND REFRESHMENTS

☒ TELEPHONES

△ REST ROOMS

* TICKET BOOTHS



NEW ORLEANS SQUARE

ADVENTURES AND ATTRACTIONS

- 1 Santa Fe & Disneyland Railroad
- 2 Pirates of the Caribbean (coming soon)

FOOD AND REFRESHMENTS

- 3 The Blue Bayou Restaurant
- 4 The Creole Cafe
- 5 The French Market

SHOPS AND STORES

- 6 One-Of-A-Kind Shop
- 7 Le Gourmet
- 8 Laffite's Silver Shop
- 9 Cristal d'Orleans
- 10 Mlle. Antoinette's Parfumerie
- 11 Le Forgeron
- 12 Portrait Artist
- 13 Candy Carts
- 14 Flower Stall
- 15 Hat Shop

☒ TELEPHONES

△ REST ROOMS



FRONTIERLAND

ADVENTURES AND ATTRACTIONS

- 1 Shooting Gallery
- 2 Mark Twain Steamboat
- 3 Columbia Sailing Ship
- 4 Mine Train Ride
- 5 Pack Mules
- 6 Tom Sawyer Island Rafts
- 7 Mike Fink Keel Boats
- 8 Columbia Museum
- 9 Indian War Canoes
- 10 Santa Fe & Disneyland Railroad

FOOD AND REFRESHMENTS

- 11 Casa de Fritos
- 12 Pepsi-Cola Golden Horseshoe
- 13 Oaks Tavern
- 14 Malt Shop
- 15 Cone Shop
- 16 Aunt Jemima's Kitchen
- 17 Indian Village
- 18 Fort Wilderness Snack Bar

SHOPS AND STORES

- 19 Frontier Trading Post
- 20 Pendelton Woolen Mills Store
- 21 Davy Crockett Arcade
Mexican Village
Jemrocks
Frontierland Hats
Frontier Print Shop
Bonekraft
Souvenir Stand
- 22 Indian Trading Post

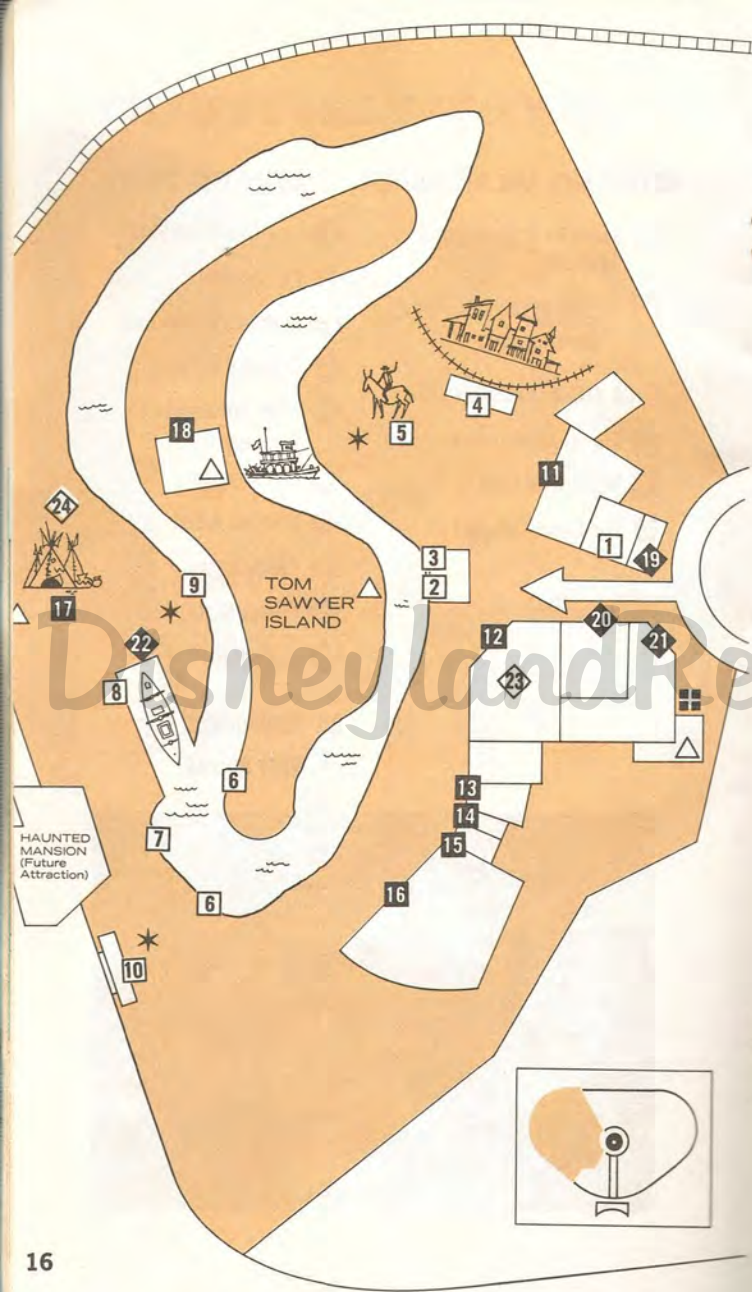
FREE SHOWS AND EXHIBITS

- 23 Pepsi-Cola Golden Horseshoe Revue
- 24 Indian Village

☐ TELEPHONES

△ REST ROOMS

* TICKET BOOTHS



Fantasyland

ADVENTURES AND ATTRACTIONS

- 1 Sleeping Beauty Castle
- 2 Peter Pan Flight
- 3 King Arthur Carrousel
- 4 Snow White's Adventures
- 5 Mad Tea Party
- 6 Fantasyland Theatre
- 7 Dumbo Flying Elephants
- 8 Skyway to Tomorrowland
- 9 Casey Jr. Circus Train
- 10 "It's a Small World" presented by Bank of America
- 11 Storybook Land Canal Boats
- 12 Motor Boat Cruise
- 13 Alice in Wonderland
- 14 Mr. Toad's Wild Ride

FOOD AND REFRESHMENTS

- 15 Welch's Grape Juice Bar
- 16 Character Food Stands
- 17 Chicken of the Sea Pirate Ship Restaurant

SHOPS AND STORES

- 18 Arts and Crafts
- 19 Castle Candy Shoppe
- 20 Tinkerbell Toy Store
- 21 Merlin's Magic Shop
- 22 Mad Hatter
- 23 Souvenir Stands

☒ TELEPHONES

△ REST ROOMS

* TICKET BOOTHS



Tomorrowland

ADVENTURES AND ATTRACTIONS

- 1 20,000 Leagues Exhibit
- 2 Art of Animation
- 3 Tomorrowland Jets
- 4 Richfield Autopias
- 5 Skyway to Fantasyland
- 6 Douglas Rocket to the Moon
- 7 Flying Saucers
- 8 Santa Fe & Disneyland Railroad
- 9 Disneyland-Alweg Monorail Trains
- 10 Submarine Voyage
- 11 Matterhorn Bobsleds

SHOPS AND STORES

- 14 Fun Fotos
- 15 Hobbies, Souvenirs and Hats
- 16 Tomorrowland Art Corner
- 17 Caricatures

FREE SHOWS AND EXHIBITS

- 18 Monsanto Hall of Chemistry
- 19 Bell Telephone's "America the Beautiful"
- 20 Monsanto Home of the Future
- 21 Flight Circle

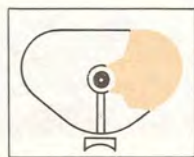
FOOD AND REFRESHMENTS

- 12 Space Bar
- 13 Yacht Bar

☒ TELEPHONES

△ REST ROOMS

* TICKET BOOTHS



Food and Refreshments

Disneyland has a large variety of restaurants and refreshment centers. You will discover a menu to please every palate and pocketbook in Disneyland.

MAIN STREET, U.S.A.

Carnation Ice Cream Parlor

Salads, hot dogs, hamburgers and beverages. Specializing in sodas and fancy sundaes.

Carnation Plaza Gardens

Salads, sandwiches, hot dogs, hamburgers and beverages. Featuring sodas, sundaes, malts and ice cream cones.

Coke Refreshment Corner

Featuring Coca-Cola, wrapped sandwiches and chips.

Hills Bros. Coffee House and Garden

Featuring beverages, sandwiches and light snacks.

Plaza Inn

Price Range: Breakfast, 35 cents to \$1.50; Luncheon, 95 cents to \$2.25; Dinner, 95 cents to \$2.75.

Breakfast, Lunch and Dinner: Buffet a la carte, grand salad specialties, hot sandwiches, hot entrees, roast chicken, roast beef, chopped sirloin steak, French pastries, cream pies, layer cakes and children's plates.

Plaza Pavilion

Price Range: 95 cents to \$1.50.

Luncheon and Dinner: A la carte salads, choice hot entrees, hot sandwiches, special desserts and children's plates.

Sunkist Citrus House

Featuring fresh orange juice, lemonade, orange cheese cake, lemon tarts and frozen juice bars.

Train Depot Snack Bar

Hot dogs, popcorn and beverages.

ADVENTURELAND

Sunkist, "I Presume"

Featuring fresh orange juice, lemonade, donuts, coffee and jungle juleps.

Tahitian Terrace—Waitress Service

Price Range: 35 cents to \$3.75.

Luncheon and Dinner: Hot Polynesian specialties, exotic salads, teriyaki steaks, desserts, coolers and children's specialties.

NEW ORLEANS SQUARE

The Blue Bayou Restaurant—Waitress Service

Price Range: Luncheon, \$1.75 to \$2.25; Dinner, \$1.95 to \$3.50. A la carte: 40 cents to \$1.75.

Featuring complete Table d'Hote Luncheons and Dinners, including salad, hot entree, home-baked French Bread, and beverage. A la carte specials all day. Children's menus.

The Creole Cafe—Waitress Service

Price Range: 25 cents to \$1.25.

Featuring coffees of the world, espresso included; French pastries; fabulous sandwiches, and ice cream parlor delicacies of yore.

The French Market

Price Range: 50 cents to \$1.75.

Louisiana Fried Chicken, barbecued beef and ham, sandwiches and entrees, sea food specialties, salads, desserts, beverages; children's menus.

FRONTIERLAND

Aunt Jemima's Kitchen

Price Range: 45 cents to \$1.75.

Breakfast All Day: Pancakes, waffles, ham, bacon, sausage, eggs and beverages.

Casa de Fritos

Price Range: 10 cents to \$1.50.

Featuring Mexican food specialties, combination plates, tamales, enchiladas, Fritos, chips, chili and beverages.

Cone Shop

Ice cream cones.

Fort Wilderness Snack Bar—(Tom Sawyer Island)

Hot dogs, candy, cider and coffee.

Indian Village

Foot long hot dogs, beverages, cookies, brownies and popcorn.

Malt Shop

Assorted flavored malts, hamburgers and hot dogs.

Oaks Tavern—Short Orders

Chili and beans, hamburgers, hot dogs, cold and hot beverages.

Pepsi-Cola's Golden Horseshoe

Featuring Pepsi-Cola, wrapped sandwiches and chips.

FANTASYLAND

Character Food Stands

Sandwiches, hamburgers, hot dogs, juices, hot and cold beverages.

Pirate Ship

Price Range: 10 cents to 90 cents.

Featuring Chicken of the Sea tuna, hot tuna pie, tuna burger, tuna sandwiches, shrimp cocktail and beverages.

Welch's Grape Juice Bar

Welch's pure grape juice and grape juice bars.

TOMORROWLAND

Space Bar

Hamburgers, hot dogs, cold sandwiches, chili and beans, salads, ice cream bars, hot and cold beverages.

Yacht Bar

Hamburgers, hot dogs, cold sandwiches, chili and beans, salads, ice cream bars, hot and cold beverages.

Shops and Stores

MAIN STREET, U.S.A.

Art Festival—Have your own pastel profile drawn in a few minutes.

Book and Candle Shop—A complete selection of both items.

Camera Shop—Film and other photographic equipment. Twenty-four hour Kodak processing is available on your color slides and movies.

Candy Palace—For the most discriminating sweet tooth.

China Shop—Decorations and gifts in ceramic and glass.

Crystal Arcade—Glassblower at work and a Book and Candle Shop with a wide selection of Walt Disney books as well as candles from all over the world.

Emporium—Featuring a complete selection of gifts for the entire family.

Flower Market—Unusual man-made flowers and floral pieces.

Hallmark Communication Center—A complete display of Hallmark greeting cards, party packs and other paper items.

Jewelry Store—Large selection of specially-designed jewelry.

Main Street Gifts—Selection of Walt Disney souvenir items and decorated soaps.

Mat Hatter Shop—Colorful variety of unique Disneyland hats.

Magic Shop—Unusual selection of tricks, masks, gadgets and souvenirs.

Silhouette Studio—Artists create and frame silhouettes while you wait.

Swift's Market House—An old-fashioned general store complete to cider and dill pickles. Includes C & H Sugar Corner, featuring a variety of penny candies.

Timex Watches—A complete display of Timex timepieces.

Tobacco Shop—Tobaccos and smoking accessories from around the world.

Wonderland Music Shop—Listening pleasure for every taste, including favorites from Disney films.

ADVENTURELAND

Adventureland Bazaar—Rare products and gifts from all over the world in a jungle atmosphere. Includes GUATEMALAN WEAVERS, LEE BROS. and MAGIC CARPET BAZAAR.

Adventureland Traders—South Sea Island apparel in a colorful assortment.

Tiki's Tropical Traders—Hats, souvenirs.

NEW ORLEANS SQUARE

One-Of-A-Kind Shop—Exacting customers will find choice antiques, reproductions, and other unique gifts gathered from all parts of the world.

Le Gourmet—Unusual cooking and serving accessories available for purchase, along with a selection of exotic foods and featuring spices by Spice Islands.

Laffite's Silver Shop—A silversmith creates works of art on the spot, surrounded by forge, molds and other tools of his trade. He also makes minor repairs.

Cristal d'Orleans—An artisan provides on-the-spot services to his guests, by making special glass objects or placing items of personal value, such as rings and class pins, in bottles.

Mlle. Antoinette's Parfumerie—A complete line of select perfumes, and the services of a perfumer to blend unique fragrances.

Le Forgeron—Shoppers can choose among metal flowers and rare stained glass artifacts, made to order.

Flower Stall (in the Grand Courtyard)—Artificial flowers made from a number of unusual materials not always found in this type of merchandise.

FRONTIERLAND

Davy Crockett Arcade—Includes the MEXICAN SHOP; FRONTIERLAND HATS; JEMROCKS, displaying unusual jewelry; the FRONTIER PRINT SHOP, with custom head-lined newspapers and stationery; a BONEKRAFT SHOP, featuring jewelry carved of bone, ivory and rare woods; and a SOUVENIR STAND.

Frontier Trading Post—Western items, Indian apparel and gifts.

Indian Trading Post—A re-creation of an Indian store featuring authentic Indian gifts.

Pendleton Woolen Mills Store—A complete selection of woolen fabrics and fashions for men, women and children.

FANTASYLAND

Arts and Crafts—Features a unique selection of clocks and other imports.

Castle Candy Shoppe—A variety of unusual candies.

Mad Hatter—Hats of every size, shape and color.

Merlin's Magic Shop—A medieval setting for a large selection of magic supplies and tricks.

Souvenir Stands—Four outdoor stores with a selection of Disneyland souvenirs.

Tinkerbell Toy Store—Toys for children of all ages.

TOMORROWLAND

Caricatures—Have your caricature made in minutes.

Fun Fotos—A location specializing in novelty photos.

Hobbies and Souvenirs—An outdoor stand with model kits and other hobby material.

Mad Hatter—Colorful and unusual Disneyland hats.

Tomorrowland Art Corner—Original cartoon "cells" from Disney movies, and other Disney character merchandise.

Your Disneyland Entertainment Calendar

The popular 16-piece Disneyland Band performs for your enjoyment daily, as follows:

- | | |
|------------------------------|---|
| 11:00 a.m.-11:15 a.m. | Main Street Parade and Town Square Concert. |
| 11:30 a.m.-12:10 p.m. | March through Adventureland and Tomorrowland and concert aboard the Mark Twain. |
| 12:45 p.m.-1:45 p.m. | Daily concert at Plaza Gardens. |
| 5:30 p.m.-6:00 p.m. | Main Street Parade and Retreat Ceremony. |

In addition, the following special musical groups entertain throughout the Park at the times and places noted:

- | | |
|----------------------------|---|
| 2:45 p.m.-3:30 p.m. | Keystone Kops—
Town Square
Plaza Hub

Polka Band—
Douglas Rocket
20,000 Leagues
Matterhorn Bobsleds
Fantasyland

Strawhatters—
Rivers of America |
| 4:00 p.m.-5:00 p.m. | Keystone Kops—
Plaza Hub
Town Square

Polka Band—
Douglas Rocket
20,000 Leagues
Matterhorn Bobsleds
Fantasyland

Strawhatters—
Rivers of America |

The Pepsi-Cola Golden Horseshoe Revue is performed five times daily in its own "saloon" in Frontierland. Show times are 1:00, 2:30, 4:00, 5:30 and 7:00 p.m.

Indian Village, Frontierland—The "Old West" comes alive during authentic ceremonial dancing twice each hour: Tuesday through Saturday, 10:00 a.m. to 8:00 p.m.; Sunday and Monday, 12:00 Noon to 8:00 p.m.

On a Bicycle Built for Four, the Dapper Dans entertain throughout Disneyland, 1:30 to 8:30 p.m.

Living Mermaids from Mythical Times can be seen daily in the Submarine Lagoon, 11:00 a.m.-5:45 p.m.

Tahitian Terrace, Adventureland—The Royal Tahitians bring South Seas dancing and musical entertainment to diners: Monday through Thursday, on the hour, from 5:00 to 11:00 p.m.; Friday and Saturday, on the hour, from 6:00 p.m. to 12 Midnight.

A Variety Musical Treat aboard the Mark Twain is provided by the Young Men from New Orleans, Tuesday through Sunday, 5:00 p.m. to 12:15 a.m.

The Clara Ward Singers sing out their spirited spirituals at Pepsi-Cola's Golden Horseshoe on the hour, Monday through Thursday, 8:00 to 11:00 p.m., and Friday and Saturday, 9:00 p.m. to 12:00 Midnight.

Fantasy In The Sky, a spectacular fireworks display, every night, all summer, 9:00 p.m.

SPECIAL ENTERTAINMENTS

Something for everybody is offered at the 20,000 Leagues Exhibit Monday through Wednesday:

Hootenanny—Monday, continuous, 8:00 to 11:00 p.m.

Humdinger—Tuesday, 8:00, 9:30 and 11:00 p.m.

Country and Western Night—Wednesday, 8:00 to 11:00 p.m.

Free Shows and Exhibits

In addition to the many Disneyland adventures and attractions, you will enjoy visiting the outstanding free shows and exhibits sponsored by many nationally-famous companies for your enjoyment.

MAIN STREET, U.S.A.

Eastman Kodak Exhibit—Free photo information and assistance and minor camera adjustments are performed free of charge.

INA's Carefree Corner—Disneyland's Official Information and Registration Center. Sign the guest book and then pick up your complimentary copy of the Declaration of Independence when you leave Disneyland.

Swift's Market House—The General Store of Grandfather's Day, complete to package goods and a party line wall telephone. **C & H Sugar Corner** features old fashioned penny candy as well as unique colored sugar crystals.

Upjohn Pharmacy—An accurate re-creation of an 1890 era drug store. Be sure to pick up your free Unicap vitamins while visiting.

Wurlitzer Music Hall—See a complete display of pianos and organs and enjoy the daily organ concerts.

FRONTIERLAND

Pepsi-Cola Golden Horseshoe Revue—A way-out-West variety show which has delighted millions of Disneyland guests with its singing, dancing and comedy entertainment.

TOMORROWLAND

Bell Telephone System Exhibit—The Bell System's "Circarama" display takes guests on a tour through "America the Beautiful" via a 360 degree motion picture.

Monsanto Home of the Future—This "years ahead" home shows how science will shape the dwelling of tomorrow with the use of plastics.

Monsanto Hall of Chemistry—Chemistry's contributions to tomorrow's life are shown in this exhibit. Also includes Chemstrand's exhibit of fashions and fabrics.

INDEX

"A" Coupon Attractions	5
Adventureland Bazarr	12, 26
Adventureland Traders	12, 26
Alice in Wonderland	6, 18
Art Festival	10, 25
Art of Animation	5, 20
Arts and Crafts Shop	18, 27
Aunt Jemima's Kitchen	16, 23
"B" Coupon Attractions	5
Baby Station	3, 10
BankAmericard	3
Banking Services	3, 10
Bell Telephone System Exhibit	20, 30
Blue Bayou Restaurant, The	14, 23
Book and Candle Shop	10, 25
Calendar of Events	28, 29
Camera Shop	10, 25
Candy Carts	14
Candy Palace	10, 25
Caricatures	20, 27
Carnation Ice Cream Parlor	10, 22
Carnation Plaza Gardens	10, 22
Casa de Fritos	16, 23
Casey Jr. Circus Train	5, 18
Castle Candy Shop	18, 27
"C" Coupon Attractions	6
C & H Sugar	10, 30
Character Food Stands	18, 24
Chemstrand Exhibit	20, 30
Chicken of the Sea Pirate Ship	18, 24
China Shop	10, 25
Cinema, Main Street	5, 10
City Hall	2, 10
Coke Refreshment Corner	10, 22
Columbia Sailing Ship and Museum	6, 16
Coming Attractions	7
Cone Shop	16, 24
Creole Cafe, The	14, 23
Cristal d'Orleans	14, 26
Crystal Arcade	10, 25
"D" Coupon Attractions	6, 7
Davy Crockett Arcade	16, 27
Disney Characters	29
Disneyland Band	28
Douglas Rocket to the Moon	6, 20
Dumbo Flying Elephants	6, 18
"E" Coupon Attractions	7
Eastman Kodak Exhibit	10, 30
Emporium	10, 25
Enchanted Tiki Room	7, 12
Fantasyland Theatre	5, 18
Fire Engine	5, 10
First Aid	3, 10

Flight Circle	20
Flying Saucers	6, 20
Flower Market	10, 25
Flower Stalls	14, 26
Fort Snack Bar	16, 24
French Market, The	14, 23
Frontier Trading Post	16, 27
Fun Fotos	20, 27
Glass Blowers	10, 14, 25
Global Van Lines' Lockers and Lost & Found	2, 10
Great Moments with Mr. Lincoln	7, 10
Guatemalan Weavers	12, 26
Guided Tours	4, 10
Hallmark Communications Center	10, 25
Hat Shop	14
Hills Bros. Coffee House and Garden	10, 22
Hobbies and Souvenirs	20, 27
Horse Cars	5, 10
Horseless Carriage	5, 10
Hours	29
INA Carefree Corner	2, 10, 30
Indian Trading Post	16, 27
Indian Village	16, 24
Indian War Canoes	7, 16
Information, General	2, 3
"It's a Small World"	7, 18
Jewelry Store	10, 25
Jungle River Cruise	7, 12
Ken-L-Land	2, 10
King Arthur Carrousel	5, 13
Laffite's Silver Shop	14, 26
Lee Bros	12, 26
Le Forgeron	14, 26
Le Gourmet	14, 26
Locker Service	2, 10
Lost and Found	2, 10
Lost Children	3, 10
Mad Hatter	10, 18, 20, 25, 27
Mad Tea Party	5, 18
Mlle. Antoinette's Parfumerie	14, 26
Magic Carpet Bazaar	12, 26
Magic Shops	10, 18, 25, 27
Mail Service	2
Main Street Gifts	10, 25
Malt Shop	16, 24
Mark Twain Steamboat	6, 16
Matterhorn Bobsleds	7, 21
Mike Fink Keel Boats	6, 16
Mine Train Ride	7, 16
Monorail Trains	7, 20
Monsanto Hall of Chemistry	20, 30
Monsanto Home of the Future	20, 30
Motor Boat Cruise	5, 18
Mr. Toad's Wild Ride	6, 18
Oaks Tavern	16, 24
Omnibus	5, 10
One-Of-A-Kind Shop	14, 26

Pack Mules	7, 16
Pendleton Woolen Mills Store	16, 27
Pepsi-Cola Golden Horseshoe Revue	16, 24, 29, 30
Perfumer	14, 26
Pet Care Facilities	2, 10
Peter Pan Flight	6, 18
Pirates of the Caribbean	7
Plaza Inn	10, 22
Plaza Pavilion	10, 22
Portrait Artist	14
Postage Stamps	2
Primeval World	7, 9
Print Shop	16, 26
Rafts, Tom Sawyer Island	7, 16
Rest Rooms	3 (see area maps)
Richfield Autopias	6, 20
Rocket to the Moon	6, 20
Santa Fe & Disneyland Railroad	7, 10, 14, 16, 18
Shooting Galleries	6, 12, 16
Shops and Stores	25, 26, 27
Shows and Exhibits	30
Silhouette Studio	10, 25
Silversmith	14, 26
Skyways	6, 18, 20
Sleeping Beauty Castle	5, 18
Snow White's Adventures	6, 18
Souvenir Stands	(see area maps)
Space Bar	20, 24
Spice Islands	14, 26
Stained Glass	14, 26
Storybook Land	6, 18
Strollers	3, 10
Submarine Voyage	7, 20
Sunkist Citrus House	10, 22
Sunkist, "I Presume"	12, 23
Surrey	5, 10
Swift's Market House	10, 30
Swiss Family Treehouse	5, 12
Tahitian Terrace	12, 23
Telephones	2 (see area maps)
Ticket Books	4 (see area maps)
Tiki's Tropical Traders	12, 26
Tinkerbell Toy Store	18, 27
Timex Watches	10, 25
Tobacco Shop	10, 26
Tom Sawyer Island Rafts	7, 16
Tomorrowland Art Corner	20, 27
Tomorrowland Jets	6, 20
Train Depot Snack Bar	10, 22
Treehouse, Swiss Family	5, 12
20,000 Leagues Exhibit	5, 20
Upjohn Pharmacy	10, 30
Welch's Grape Juice Bar	18, 24
Wheel Chairs	3, 10
Wonderland Music Shop	10, 26
Wurlitzer Music Hall	10, 30
Yacht Bar	18, 24